

**CT DEEP 2014  
FISHING REPORT NUMBER 5  
5/22/2014**



American shad (*Alosa sapidissima*)



**YOU CAN FIND US DIRECTLY ON FACEBOOK.** This page features a variety of information on fishing, hunting, and wildlife watching in Connecticut. The address is [www.facebook.com/CTFishandWildlife](http://www.facebook.com/CTFishandWildlife).

**SHARE THE EXPERIENCE**  
Take someone fishing

**WORLD FISH MIGRATION DAY!! TOURS OF 15 DIFFERENT FISHWAYS, STATEWIDE  
INCLUDING THE RAINBOW FISHWAY, THE STATE'S LARGEST**

***See migrating fish in the underground viewing window.***

**DEEP's annual OPEN HOUSE AT THE RAINBOW FISHWAY is this Saturday, May 24, from 10:00 am until 3:00 pm.** The public is invited to visit the fishway and learn about both it and the fish it passes. During this day, the public can tour the facility and are encouraged to go downstairs and check out the underground viewing window. Shad and lamprey may be seen passing upstream, and even perhaps an adult Atlantic salmon. Staff will be on hand to answer questions. This is a **GREAT ACTIVITY FOR FAMILIES**, and there is no fee. *Directions can be found on page 4 at the end of the Inland Report section.*

**BUT THIS YEAR THERE'S MORE DUE TO THE DESIGNATION OF MAY 24<sup>TH</sup> AS WORLD FISH MIGRATION DAY! TALKS ABOUT MIGRATORY FISH AT THE OLD LYME HIGH SCHOOL AT 9:00 AM, A PROGRESSIVE FISHWAY TOUR OF FIVE EASTERN CT FISHWAYS LED BY A DEEP BIOLOGIST, AND OPEN HOUSES AT VARIOUS FISHWAYS FROM GREENWICH TO NORWICH, SEYMOUR, AND EAST HADDAM—THE LIST GOES ON.**

*To see all the details including a list of participating fishways, directions, times, and to sign up for the progressive tour, go to the website: <http://nature.org/ctfish>*



## **TROUT**

***This week marks the end of DEEP's spring stockings. From early March through this week, DEEP stocked nearly 600,000 brook trout, brown trout, rainbow trout and tiger trout. Approximately 389,000 fish were stocked prior to Opening Day and 210,000 fish from Opening Day to May 23.***

**RIVERS & STREAMS** - Conditions should be good for the Memorial Day weekend, with comfortable weather on tap and flows that have dropped since last weekend and are generally comfortable for fishing (currently at or moderately above typical level late May levels - *see stream flow graphic on page 4*). As some rain and showers are in the forecast, anglers should expect that flows may increase in some areas (remember, smaller tributaries and streams generally are the first to recede (stream flows for a number of areas can be found at <http://waterdata.usgs.gov/ct/nwis/rt>).

Success is being found using worms and corn/mealworm combinations as well as flies and shiners. Fair to good reports from the Naugatuck River (rainbow, 7 lbs), Farmington River, Moosup River TMA, Housatonic River, Hammonasset River, Hop River, East Aspetuck River, Fenton River, Pequabuck River,

Pootatuck River, Saugatuck River, Scantic River, Willimantic River, Branford River, Quinebaug River and Pomperaug River.

**Farmington River** – Fishing was good last week, although flows were on the higher side at times. West Branch flows have dropped some, and are moderate at Riverton (currently 338 cfs) with the Still River adding another 263 cfs. Water temperatures were in the upper 40's°F.

**Current hatches** include Hendrickson (#12-14), Blue Winged Olive (#18-20), Blue Quills (#16-18) [a.k.a. paralep], Tan Caddis (#16-18; starting), Yellow Stoneflies (#16-18). Blue Wing Olives (#18-20, mid-late afternoon), Caddis (tan #14-18, all day) and Midges (#22-28) are the current patterns working. Some Hendricksons (#12-14, 4-6 pm) are also around.

**Housatonic River** – Flows have again cleared and dropped to typical mid-May levels (currently 1,100 cfs at Falls Village and 2,020 cfs at Gaylordsville), but remain on the high side for comfortable wading. With rain in the forecast, flows may increase by Saturday. Morning water temperatures are currently in the mid to upper 50's°F.

**Current hatches** include Green Caddis (just started, mornings & evenings) and Brown/Tan Caddis (#14-18). Successful flies include March Browns (#10-12, 4pm to dark), Green caddis (#14-18, early morning & evening) and Blue Wing Olives (#18-20). Midges (#22-26) are being seen at the mouths of tributaries. Golden Stoneflies (#6) were working.

**Rivers and streams stocking update (Note that all stocking schedules are subject to change):** This week in **western Connecticut**; the **Farmington River TMA** (Goodwin Dam to Route 177, except for the year round catch-and-release-only area), Farmington River (from Route 177, Unionville, to route 4, Farmington), **Sandy Brook, Still River** (Colebrook), **Nepaug River, Mad River** and **Blackberry River** were all stocked.

In **eastern CT**, the **Shetucket River, Yantic River** (including the TMA), **Quinebaug River, Moosup River, Bigelow Brook, Still River** (Eastford), **Shunock Brook, Mount Hope River, Fenton River, Coginchaug River, Moosup River, Five Mile River** (lower – Thompson/Putnam/Killingly), **French River, Hockanum River** (below and above the TMA), **Hammonasset River** (including the TMA), the **Salmon River TMA, Natchaug River, Salmon River, Willimantic River** (in Mansfield), the **Willimantic River TMA, Hop River, Skungamaug River** and **Jeremy River** are scheduled to be stocked this week.

**LAKES & PONDS** – Trout fishing has been generally good, with reports from Highland Lake (26 trout for one boat; riggers set at 23 feet, leadline at 6 colors; Kobra 218, orange/silver Flash King), Beach Pond (riggers at 15 feet), Long Pond, Crystal Lake (8 colors, Kobra 8), Lake McDonough (7 colors near the dam), Lake Wononskopomuc (20 feet, troll slow), Stanley Quarter Park (one of the newly stocked

#### **TIPS & TRICKS – TROLLING FOR TROUT**

- Trolling requires a boat, motor, rod, reel & lure.
- Boat speed will dictate lure depth.
- Most lakes stratify into three layers during late spring, until late fall.
- The middle layer, the thermocline, has high dissolved oxygen & forage fish.
- Troll close to or in the thermocline (15-50 feet).
- All fish relate one way or another to structure.
- They use it for protection, escape from direct sunlight, feeding & spawning.
- Will attract & hold fish.
- Trout will be close to shelter
- Find the food sources & find fish.
- On a windy day, target where surface food is being blown.
- Near inlet/outlet of streams, grassy shorelines, near marshy areas food will be prevalent.
- Overhanging trees or bushes fish will be waiting for food to drop into water.
- Fish near a dropoff.
- Find steep banks & troll close to shore.
- A depth sounder will help locate structures to fish.

Community fishing Waters), Cedar Lake (double digits for one boat), East Twin Lake (riggers at 15-20 feet), Ball Pond, West Hill Pond, Mashapaug Lake, Lake Saltonstall and Mount Tom Pond.

**Lakes and ponds stocking update (Note that all stocking schedules are subject to change):** This week in **western CT**, **East Twin Lake**, **Colebrook River Lake**, **Highland Lake** and **Mad River Impoundment** were stocked.

In **eastern CT**, **Bigelow Pond**, **Mashapaug Lake**, **Beach Pond**, **Green Falls Reservoir**, **Black Pond** (Middlefield), **Millers Pond** and **Walkers Reservoir** are scheduled to be stocked.

**TROUT PARKS** – Fishing was generally good at the Trout Parks. The **Kent Falls Trout Park**, **Chatfield Hollow Brook**, **Day Pond**, **Mohegan Park Pond**, **Natchaug River** and **Valley Falls Park Pond** Trout Parks are scheduled to be stocked this week.

**LARGEMOUTH BASS** fishing is variable, ranging from slow to very good. Places to try include Highland Lake, Candlewood Lake, Gardner Lake, Billings Lake, Lake Wononskopomuc, East Twin Lake, Lake McDonough, Bantam Lake, Maltby Lake #2, Crystal Lake (Middletown), Burr Pond, Squantz Pond, Ball Pond, Lake Wintergreen, Pickerel Lake, Lake of Isles, Eagleville Lake, Bashan Lake, Quonnipaug Lake, Bolton Lake, Mono Pond, Lake Lillinonah, Messerschmidt Pond, Mashapaug Lake, Lake Saltonstall, Tyler Pond, Great Hollow Pond, Hatch Pond, Batterson Park Pond, Lake Waramaug, Park Pond, Winchester Lake, Coventry Lake, Lake Williams, Mansfield Hollow Reservoir, West Hill Pond, Quaddick Reservoir, Dog Pond, Amos Lake and Quinebaug Lake. **Tournament angler** reports are from Amos Lake (fair, with 4.08 & 3.5 lb lunkers), Gardner Lake (had to work for their fish, nothing of real size), Hopeville Pond (slow fishing, 4.5 lb lunker), Pachaug Pond (many deserted beds, slow fishing, not much size, with a 3.75 lb lunker), Pattagansett Lake (fair, with a 4.05 lb lunker), Quaddick Reservoir (good for most, with a 4.38 lb lunker), Rogers Lake (fair fishing, 4.0 lunker), Candlewood Lake (lots of in bags good for largemouth, lunkers include 5.4, 5.2 & 4.05 fish), Lake Lillinonah (slow to fair at best for largemouth, but a 4.83 lb lunker for one club), Bantam Lake (slow to fair, with 2.66 lb & 4.5 lb lunkers) and Lake Zoar (slow to fair, 3.91 lb lunker).

#### ZEBRA MUSSELS REMINDER

**Zebra mussels are now found in a number of locations scattered throughout the Housatonic River and its impoundments including Lake Lillinonah (since 2010), Lake Zoar (since 2010) and Lake Housatonic (since 2011).**

Prior to their discovery in Lakes Lillinonah and Zoar in 2010, zebra mussels had been found (1998) in CT only in East Twin Lake and West Twin Lake (Salisbury). Anglers fishing in any of these waters and western Connecticut in general **should use extra care to avoid transporting water, aquatic vegetation, and possibly zebra mussels to new locations.** Information

For more information including precautions that should be taken to prevent the spread of zebra mussels to additional waters, visit [www.ct.gov/deep/invasivespecies](http://www.ct.gov/deep/invasivespecies) or the Aquatic Invasive species section of the 2014 CT angler's Guide( [www.ct.gov/deep/anglersguide](http://www.ct.gov/deep/anglersguide)).



**SMALLMOUTH BASS** are reported at

Candlewood Lake, Colebrook Reservoir, Mashapaug Lake, Lake McDonough and Bantam Lake.

**Tournament angler** reports are from Candlewood Lake (very good smallie action, with lots of fish in the 3-4 lb range), Lake Lillinonah (good for smallmouth, with some fish 3 lbs and up), Gardner Lake (tough finding them), Bantam Lake (a few fish) and Lake Zoar (fairly good smallmouth action).

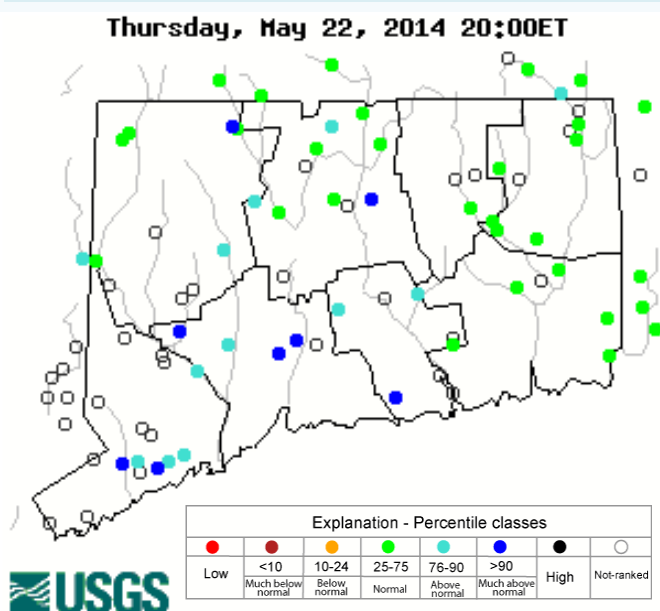
**WALLEYE** are being reported from Lake Saltonstall, Coventry Lake and Batterson Park Pond.

## CONNECTICUT RIVER

The river has dropped and cleared some since Monday, although still turbid with some debris, and is back near typical mid-May levels (with some rain in the forecast before the weekend, flows may again increase). **STRIPED BASS** are well into the river with many legal fish being caught. Artificial lures and bait are producing well. Spawning bait fish are attracting fish with sightings being observed by anglers.

**AMERICAN SHAD** are being reported in the river up to the Holyoke area. Over 155,000 shad were passed upstream at the Holyoke (MA) fish lift this past week. Prior to last week, only 6,000 had been passed. Fishing for them this year has been hit or miss due to river conditions. Water temperatures are still on the low side for them but they are moving. **SMALLMOUTH BASS** are being caught in the upper river. This will get better as water temperatures increase. **CATFISH** are consistently being caught on cut bait. **NORTHERN PIKE** are reported in the Haddam Meadows to Middletown area and in Wethersfield Cove.

### Stream flow conditions as of 5/22/2014



Data in the state graphic to the left are generated by the United States Geologic Survey (USGS) and are available on line at: <http://waterdata.usgs.gov/ct/nwis/rt>.

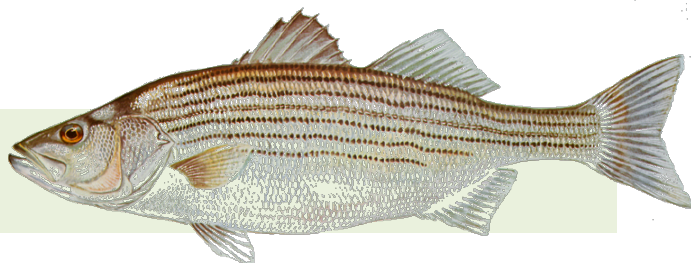
*A percentile is a value on a scale of one hundred that indicates the percent of data in the data set equal to or below it. For example streamflow greater than the 75<sup>th</sup> percentile means only ¼ of the streamflow values were above the value and thus would be considered "above normal". Stream flow between the 25<sup>th</sup> and 50<sup>th</sup> are considered to be "normal flows" and those 25<sup>th</sup> or less are considered to be "below normal".*

### Directions to Rainbow Fishway:

**From Rt. I-91**, take exit 40 to Rt.20 (Bradley Airport Exit). Travel west to the Hamilton South exit. At the end of the exit ramp turn left. Turn right at the first intersection on to Rainbow Road. The fishway is on the left about a quarter of a mile down the road. Look for a cyclone fence and a brown sign with yellow lettering.

**From Rt.20 East** (traveling toward I-91), go past the exit for Bradley Airport and take the Hamilton exit. At the end of the exit ramp turn right. Turn right at the first intersection on to Rainbow Road. The fishway is on the left about a quarter of a mile down the road. Look for a cyclone fence and a brown sign with yellow lettering.

## MARINE FISHING REPORT



Surface water temperatures in Long Island Sound (LIS) are in the mid to upper 50's °F. Check out the following web sites for more detailed water temperatures and marine boating conditions:

<http://www.mysound.uconn.edu/stationstat.html>

[http://marine.rutgers.edu/mrs/sat\\_data/?nothumbs=1](http://marine.rutgers.edu/mrs/sat_data/?nothumbs=1)

<http://www.ndbc.noaa.gov/>

<http://www.wunderground.com/MAR/AN/330.html>

**STRIPED BASS** fishing is picking up after the "Flower" Full Moon this month. Early morning (before/during sunrise) has been the most productive for large cow bass. The usual areas include the Watch Hill reefs, lower Thames River, the Race, Plum Gut, Pigeon Rip, Little Gull, outer Bartlett Reef, Black Point, Hatchett Reef, lower Connecticut River, Long Sand Shoal, Cornfield Point, Southwest Reef (outer), Six Mile Reef, the reefs off Branford, Faulkner's Island, New Haven Harbor (including Sandy Point), Charles Island area, Housatonic River, buoys 18 and 20 off Stratford Point, east of Milford, Stratford Shoal/Middle Ground, Bridgeport Harbor, Penfield Reef, around the Norwalk Islands, and Cable and Anchor Reef. Live lining bunker, hickory shad, eels, scup or using fresh cut bait on three way bottom rigs or fish finder rigs will work for "Cow" bass. Tube jigs/worms in bubblegum or pink has also been productive for "keeper" linesiders. Adult menhaden (Bunker) now occur in the lower rivers throughout the sound and is an excellent live bait choice.

See page 60 of the 2014 CT Angler's Guide for [Connecticut Tides](#)

**BLUEFISH** fishing has just begun...with an influx of good size choppers and "alligator-sized" blues invading Long Island Sound. Bluefish weighing 8 to 13 pounds are being reported along the north shore of Long Island and throughout the Peconics.

**SUMMER FLOUNDER** (fluke) fishing is fair overall. There are some big doormats (fish to 13 pounds) out there but you have to put your time in if you want to be the "Duke of Fluke". Fishing locations include south side of Port Jefferson, Peconics, Fishers Island (Isabella Beach, Wilderness Point), off the Stonington breakwater, mouth of the Mystic River to Groton Long Point, Thames River channel, Black Point/Niantic Bay, Long Sand Shoal, Westbrook-Clinton area, Falkner Island area, New Haven Harbor to West Haven, Woodmont, Norwalk (Islands) and off the mouth of the Housatonic River. Since squid are coming in, offering a live one on the bottom (10-40 feet) would be a good move for catching that big slab doormat fluke!

**Anglers Please Note:** *New York has the same summer flounder (fluke) regulations as Connecticut. Rhode Island has an 18 inch minimum length with an 8 fish daily creel limit. However, since Rhode Island has a higher daily creel limit than Connecticut and New York, make sure you abide by the state with the most restrictive regulation when crossing (by boat) state boundaries.*

**WINTER FLOUNDER** fishing remains very slow. The Poquonock River at Bluff Point State Park, Thames River in the Pine Island area, the Brothers, Niantic River/Bay, Jordan Cove, mouth of the CT River, lower Saugatuck River and the channels in Norwalk Harbor have been the traditional flounder spots.

**SCUP** (porgy) fishing is fair with the first scup of the season migrating to the major reefs/rock piles. Porgies measuring 10-16 inches ("hubcap size") in length are the norm! Porgy fishing has also been reported at these shore fishing locations: Rocky Neck State Park, Meigs Point Hammonasset State Park



and Fort Trumbull State Park. Locate your favorite [Enhanced Shore Fishing Opportunities](#) for these excellent eating “Reef Slammers”. These “panfish of the sea” are easily caught on sandworms/cut squid or any other small piece of bait. Contact your local [bait and tackle shop](#) for updated fishing information.

**HICKORY SHAD** fishing is good in the lower Connecticut River by the DEEP Marine Headquarters fishing pier. Connecticut Tarpon (Hickory shad) can be found mixed in with schoolie striped bass and American Shad. Flood tide is best and lures of choice are a willow leaf, kastmaster, small plastic jigs, and or shad darts.

**WEAKFISH** fishing is picking up from Branford through West Haven to Milford (Charles Island).

**WHITE PERCH** fishing is good in the lower Connecticut River (coves and tributaries) and by the DEEP Marine Headquarters fishing pier/under the railroad bridge. Perch can be found mixed in with schoolie bass and hickory shad. Grass shrimp/sandworm is the best bait along with kastmasters and willow leaves.

**NOTABLE MARINE CATCHES – Winter Flounder (18.5 inches, 3lbs), Niantic- by William Sean Harrison.**

### **Special note- BONUS STRIPED BASS FISHING PROGRAM**

The Bonus Striped Bass Voucher Program will run **May 1 through December 31** in 2014. Vouchers **will be available beginning May 1 at DEEP Offices and Facilities listed below**. There is a limit of one voucher annually per fishing license holder. However, for convenience one person may pick up at most two vouchers by presenting valid fishing licenses for two anglers. Children are also eligible to receive a voucher by signing up for a free [Youth Fishing Passport](#). Vouchers will be available on a first come first serve basis for as long as supplies last.

DEEP Offices/Facilities	Address	Town	State	Zip
<a href="#">Marine Headquarters</a> , M-F 8am-4pm, 860-434-6043	333 Ferry Road	Old Lyme	CT	06371
<a href="#">Eastern District</a> , M-F 8:30am-4pm, 860-295-9523	209 Hebron Ave	Marlborough	CT	06447
<a href="#">Western District</a> , M-F 8:30am-4pm, 860-485-0226	230 Plymouth Rd	Harwinton	CT	06791
<a href="#">Franklin WMA</a> , M-F 8:30am-4:30pm, 860-642-7239	391 Route 32	Franklin	CT	06254
<a href="#">Sessions Woods WMA</a> , M-F 8:30am-4pm, 860-675-8130	341 Milford Street (Rte 69)	Burlington	CT	06013
<a href="#">CTDEEP Main Office</a> M-F 9am-4pm, 860-424-3105	79 Elm Street	Hartford	CT	06106
<a href="#">Sherwood Island State Park</a> M-S 8am-4:30pm, 203-226-6983	Route 1 north to the Sherwood Island Connector in Westport	Green Farms	CT	06838

The striped bass bonus fishery is an opportunity to harvest a limited number of smaller (22 inch to less than 28 inches) striped bass during May through December, both in the Marine and Inland Districts of Connecticut state waters only. The Bonus fishery was approved by the Atlantic States Marine Fisheries Commission’s Striped Bass Management Board which oversees the conservation of the species throughout its range. Amendment 6 to the Striped Bass Fishery Management plan currently allocates a 23,750 pound commercial striped bass quota to Connecticut which is being used in this program to provide this additional recreational fishing opportunity since commercial striped bass harvest is

prohibited in this state. The unused commercial quota equates to 4,025 fish available for harvest under this program.

Anglers are also encouraged to use this program to introduce a friend, neighbor or child to fishing: “Share the Experience – Take Someone Fishing”. The department is also interested in encouraging and enhancing urban and shore fishing opportunity which the bonus striper program is especially well suited for. Bass fishermen generally may want to hold onto a voucher to use if an undersized fish intended for release is deep hooked or otherwise unlikely to survive. Alternatively, anglers should consider taking a smaller bonus fish home for a meal and releasing the larger (28”+) “spawner” fish.

**2014 Connecticut Bonus Striped Bass Voucher** 0001

*To be completed upon harvest of a qualifying fish!*

Date:  /  2014  
(mm) (dd)

Total length: 22" 23" 24" 25" 26" 27"  
Please circle one length. Drop fractional lengths; for example, mark 23 1/4" as 23"

**Sample Only!**

Signature:  Conservation ID #:

I understand this voucher authorizes the possession of one bonus striped bass harvested today. I also understand this voucher is not valid until I have recorded today's date and the total length of the bonus striped bass I have harvested and until I have signed this voucher in ink and recorded my Conservation ID #. I further understand that any striped bass less than 28 inches total length in my possession without a completed and signed voucher is a violation subject to fine and suspension of my sportfishing and hunting privileges. I will return this voucher to DEEP Marine Fisheries within 48 hours of harvesting a bonus striped bass.

A bonus striped bass is a striped bass at least 22 inches but less than 28 inches total length harvested from Connecticut waters between May 1 and December 31 and accompanied by a valid voucher.

Web: [www.ct.gov/deep/saltwaterfishing](http://www.ct.gov/deep/saltwaterfishing) Phone: 860-434-6043 E-mail: [deep.marine.fisheries@ct.gov](mailto:deep.marine.fisheries@ct.gov)

### Program Regulations

- A bonus striped bass is at least 22 inches but less than 28 inches.
- One voucher is good for one (1) bonus striped bass, and only one voucher may be used per day.
- Open Season: May 1 through December 31, 2014.
- Important: To be valid, the voucher card must be filled out and signed immediately upon harvest of a qualifying fish.
- Vouchers must be retained with the striped bass until the fish is taken to your home or other location where it is to be consumed.
- Mail the voucher back to Marine Fisheries. The voucher is already addressed and postage paid for return on the reverse side. It's free, so please mail it back to assure continuation of this program.
- Vouchers are valid in Connecticut state waters only.
- The normal limit of two (2) striped bass 28 inches or greater may also be harvested.

A total of 4,025 vouchers will be made available at DEEP offices/facilities, distributed by ENCON Officers, and CT DEEP Marine Angler Survey creel agents. There is no fee for the vouchers. A limited number of vouchers will be reserved for programs such as "Take a Kid Fishing", "Take a Veteran Fishing", Municipal youth and urban fishing programs. Please contact Marine Fisheries ([deep.marine.fisheries@ct.gov](mailto:deep.marine.fisheries@ct.gov) or telephone: 860-434-6043) if your organizations supports such a program and you would like to receive vouchers.

The Connecticut Department of Energy and Environmental Protection is an Affirmative Action/Equal Opportunity Employer that is committed to complying with the requirements of the Americans with Disabilities Act. Please contact us at (860) 418-5910 or [deep.accommodations@ct.gov](mailto:deep.accommodations@ct.gov) if you have a disability and need a communication aid or service; have limited proficiency in English and may need information in another language; or if you wish to file an ADA or Title VI discrimination complaint.

### DEEP WEEKLY Fishing Report



**Connecticut Department of  
ENERGY & ENVIRONMENTAL PROTECTION**  
79 Elm Street, Hartford, CT 06106  
[www.ct.gov/deep](http://www.ct.gov/deep)

American shad & Striped bass images courtesy  
Duane Raver/USFWS.